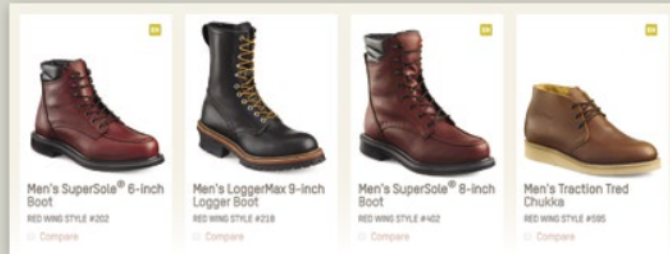


FILTER YOUR OPTIONS ONLINE

Browse all non-metallic, puncture resistant, uniform, USA-made styles and more.

See them all rWSC.co/catalog



Red Wing Technology Reference

DEVELOPING PURPOSE-BUILT WORK BOOTS TO PROTECT WORKERS

Red Wing work footwear is renowned for leading-edge technologies that ensure premium performance for the life of the product. These technologies ensure comfortable protection for modern craftsmen.



UPPER TECHNOLOGY



ArmaTec™

Added protection for durability

This technology is a protective covering that is incredibly tough and abrasion resistant. Placement of ArmaTec in high wear areas helps preserve and lengthen the life of a boot.



ArmaTec™ XT

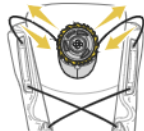
Many times more abrasion-resistant than ArmaTec™, this specially formulated new compound delivers an extremely durable layer of extra protection. Placement of ArmaTec™ in high wear areas helps preserve and lengthen the life of the boots.



Boa® Lacing System

Revolutionary closure system

Boa® technology makes getting in and out of lace-up boots faster and easier than ever. Turn the dial to tighten laces to the perfect tension, with no pressure points. One click of the reel releases the laces instantly.



Quick on and off convenience



CSA Grade 1 Protective Toe Label

Canadian Standards Association approval.

Refers to the Canadian Standards Association's (CSA) approval (CAN/CSA-Z195-09) for protective footwear. (protective toe only)



Cushin

Comfort tongue technology

Minimizes pressure some workers feel on their shin or ankle from the top of the boot tongue. A four-way stretch nylon offers relief and flexibility while walking, and an internal padded waffle mesh maintains premium comfort.



Minimizes pressure on shin



DYNAMIC FIT SYSTEM

Locks in foot with room to move.

This purposeful innovation for pull-on boots is designed to lock the foot in place with side stretch panels that allow for flexible and comfortable movement throughout the day. The stretch panels subtly yield to the pressure of the foot inside the boot, expanding just enough to allow the boot to slip on for easy entry and easy exit.



Side stretch panels allow for flexible movement



ExoFlex®

Easy on/off, locked in fit

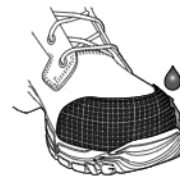
Patent-pending, ExoFlex® technology allows the boot to expand to accommodate the back of your foot. And then once you're in, it contracts for a lock-tight, high-performance fit that provides toe spring and agility in every stride.



ForceGuard™

Added protection for durability

This technology is a protective covering that provides long-wearing abrasion, oil and chemical resistance on critical areas of the boot.



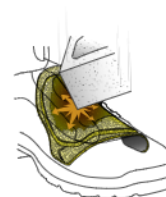
Rubber covering for durability



ForceShield™

Flexible impact absorption

A revolutionary thin, soft material that offers amazing impact absorption yet it is flexible and comfortable. ForceShield provides protection from dangerous workplace drop and impact hazards while meeting ASTM standards.



Force from impact is dissipated



Goodhue Leather
Consistent, durable leather from S.B. Foot Tanning Co.

Handcrafted, full grain leather manufactured by our S.B. Foot Tanning Company in Red Wing, Minnesota. Goodhue Leather is crafted using time-proven techniques, to yield the right color, consistency and durability.



InJex™
Injected polyurethane material

InJex™ injected polyurethane is a lightweight material specially formulated to provide excellent cushioning, flexibility, durability and support. It resists corrosive fluids, hazardous chemicals and other wet environments that can wreak havoc on traditional rubber boots.



Extreme durability with special bellows design allows easy access and secure fit



King Toe®
More toe room

Larger toe box provides 44% more toe room and comfort than our standard work boots.



44% more toe room



Realtree Xtra® Camouflage

This camo pattern works in any hunting situation with depth and lifelike images.



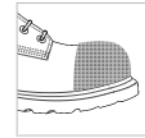
Red Wing Leather
Handcrafted leather from S.B. Foot Tanning Co.

Starting with hides from U.S. raised cattle with minimal surface imperfections, we control every step of the process, using time-honored techniques to craft leather with natural beauty and unmatched durability.



SCREENSHIELD
Lightweight abrasion resistance.

A thin but highly durable rubber coating for the toe and other high-wear areas of a work boot that enhances durability with minimal weight.



Thin coating provides durability.



SWITCHBACK SUPPORT SYSTEM
Less weight, superior performance.

Built with an integrated TPU-cord construction, this next-generation upper design approach incorporates an innovative "switchback" technique that requires less material and relies on fewer leather overlaps than a traditional work boot. The end result is greatly reduced weight without sacrificing support, comfort or durability.



Lightweight TPU-cord provides support and durability.



Trout Brook Leather
Handcrafted leather from S.B. Foot Tanning Co.

Starting with hides from U.S. raised cattle with minimal surface imperfections, we control every step of the process, using time-honored techniques to craft leather with natural beauty and unmatched durability.



LINING TECHNOLOGY



Blood-borne Pathogen Protection
Provides resistance to penetration of blood-borne pathogens

Incorporates a waterproof membrane that is highly breathable. In addition, the membrane has been shown to provide resistance to penetration of blood-borne pathogens per ASTM F1671. However, no product offers total protection. In spite of the high quality standards to which this footwear and the membrane are produced, the barrier properties can be compromised by many factors, including wear, tears, delamination, sewing or imperfect seams.

Under no circumstances will Red Wing Shoe Company, Inc., or the manufacturer of the membrane, be responsible for damages arising from the use of this product.



PrimaLoft® Insulation

Designed for repeated compression and durability over time. Featuring 90% post-consumer recycled fibers made from plastic bottles, this unique low-bulk construction maintains loft and traps body heat even when compressed. Coupled with a permanent water repellent treatment with high-density construction, this insulation keeps feet warm in dry or wet conditions.



Red Wing Waterproof
3-layers for waterproof protection

This system uses a 3-layer approach to keep feet dry. 1 - Linings help move moisture away from the foot to keep it dry. 2 - Foam provides cushioning and a comfortable fit. 3 - A waterproof bootie is a barrier to keep water out. Tricot, a protective material, is applied to the outside of the bootie to ensure a complete waterproof system.



Perspiration moves away from the foot while water stays out.



COSMOCOMFORT
Keeps feet warm, dry and comfortable

This technology provides the equivalent of 400 grams of insulation without the weight, thickness or bulk. A revolutionary manufacturing process transfers aluminum from a solid to a gas and back to a solid again, producing an extremely lightweight and paper-thin material with superior insulation, waterproofing and windproofing properties, plus exceptional breathability.



CROSSBREEZE
Instant cooling system



CrossBreeze technology moves heat away from the skin above, around and below the foot, creating an instant cooling effect.

Mesh lining and insole top fabric work together to move heat away



Gore-Tex Waterproof Membrane
Prevents water getting in, while perspiration moves out

Red Wing uses GORE-TEX for the ultimate in comfort and protection. The GORE-TEX membrane blocks moisture from the outside, while allowing moisture inside to evaporate. GORE-TEX has over 9 billion pores per square inch that prevent water from getting to your feet while allowing sweat vapor to pass right through, keeping your feet dry and comfortable in all conditions.



ScentBan™

An Irish Setter exclusive scent control process, ScentBan™ is added to various materials from leathers to linings to footbeds, killing bacteria that cause odors.



INSOLE TECHNOLOGY



ComfortForce®
Removable footbed

This removable footbed features unique Venturi air perforations to help keep feet cool and dry all day. The special weave pattern helps channel the energy caused by walking, and the arch is curved to add extra comfort. Provides extra comfort



CSA Grade 1 & ESR Classification
Canadian Standards Association approval.

Refers to the Canadian Standards Association's (CSA) approval (CAN/CSA-Z195-09) for protective footwear.



DynaForce®
Reduces underfoot pressure

A built-in insole system that absorbs pressure and provides overall support, stability and comfort. This innovative technology dramatically reduces underfoot pressure, and blocks painful pressure points by redistributing them evenly across the foot while minimizing shock.



Absorbs pressure, provides support



StableFlex™

This technology combines increased flexibility in the forefoot with a stable platform in the heel. Our superior dual-construction process incorporates a welted heel for extra stability, with cement construction in the forefoot for added flexibility and a comfortable fit.



3M™ Thinsulate™ Insulation
Insulation for active feet

Insulation for footwear that is thin, warm and lightweight, with the versatility to be worn outside and inside, to work and at work, keeping active feet comfortable even in damp conditions.



3M™ Thinsulate™ Insulation
The ultimate insulation for long hours

The ultimate insulation for cold weather boots, 3M™ Thinsulate™ Ultra Insulation is thin, warm and lightweight, with the durability to withstand long hours of hard wear and keep feet warm even in damp conditions.



UltraDry™ Waterproofing System

Our UltraDry™ construction combines a moisture management lining with waterproof components for dry, long-lasting comfort and performance.



FlexForce®
Flexible forefoot, stable heel

This technology combines increased flexibility in the forefoot with a stable platform in the heel. A superior dual-construction process incorporates a welted heel for extra stability, with flexible cement construction in the forefoot for added cushion and a comfortable fit. Elements from our exclusive DynaForce® insole are built in to reduce underfoot pressure.



RW RedBed™
4-layer underfoot comfort system

Advanced comfort via 4-layer construction of a moisture managing fabric cover, impact absorbing urethane foam, heel and motion wrap-around stabilizer and heel strike gel elastomer cushion pad. Also features perforated ventilation, instep supporting columns, longitudinal arch support and engineered heel wall geometry for upper heel strike control.



SWEN-FLEX®
Non-metallic, puncture-resistant insoles

These non-metallic, puncture-resistant insoles are manufactured from high-strength, woven fibres. They meet or exceed all world standards for puncture resistance, including CSA, ASTM and EN.



SOLE TECHNOLOGY



ENERG

The best upper on the planet is worthless if the outsole can't provide the traction, comfort and durability required for working and hunting. Irish Setter outsoles are the best in the business.

This exclusive technology offers energy return with every step.



EXTRALIGHT® SOLE COMPOUND

Performance without the weight.

Made with a special blown EVA compound, ExtraLight® technology produces an incredibly lightweight and durable outsole that provides excellent compression qualities, is highly slip resistant, and offers best-in-class oil and chemical resistance.



X-Lite Sole



Heat-resistant Outsoles

Performance on hot surfaces

Soles that have been designed and tested to perform on high heat surfaces. Soles identified as HRO are heat resistant to melting at a minimum of 475° Fahrenheit.



Durable sole resists melting.



RPM™ Technology

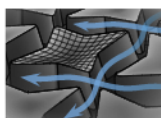
A breakthrough composite material that significantly reduces the weight of the boot, providing extreme comfort and added endurance. Engineered to provide the durability and strength of traditional materials without the extra weight.



WORX® StarGrip® Sole

Superior slip-resistance

StarGrip® Technology features an 8-sided design and a unique concave shape of the star pad sole, allowing it to act like a mini suction cup to provide greater grip of the surface.



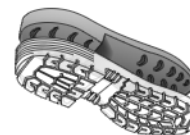
Unique Concave Shape



SuperSole® 2.0

Comfort inside. Durable outside.

Dual density urethane sole designed with inner sole to provide cushion and comfort, and outer sole to provide durability and protection. This premium sole not only provides top performance in traction, abrasion resistance, cut resistance, oil and chemical resistance, but also delivers maximum comfort.



Top performing premium sole.



SuperSole®

Comfort inside. Durable outside.

Single density urethane sole designed to provide durability and comfort. It delivers performance factors of abrasion resistance, cut resistance, traction, and oil and chemical resistance.



Mini Lug SuperSole®



Vibram®

Versatile, performance outsoles.

Exceptional design intersects with innovative rubber compounds to create versatile, performance outsoles. Vibram® outsoles offer excellent traction and high abrasion resistance in a multitude of environments.



Vibram® UltraSole



Vibram® LiteBase

Reduces weight but maintains performance.

This advanced technology reduces rubber thickness by up to 50% while keeping the lug configuration unchanged. The end result is an extremely lightweight sole with no tradeoffs in traction, durability or wear resistance.



Vibram® X-Treme Lite Sole

Footwear Size Comparison Chart for Most Common International Systems

Please note that there is no real standard for converting shoes.

Your best option is to have your foot measured professionally at a local shoe store and get the Men's and Women's sizes directly from the measurement device.

USA Men's			3.5	4	4.5	5	5.5	6	6.5	7	7.5	8	8.5	9	9.5	10	10.5	11	11.5	12	13	14	15	16
USA Women's	4	4.5	5	5.5	6	6.5	7	7.5	8	8.5	9	9.5	10	10.5	11	12								
European	33.5	34	34.5	35	36	37	37.5	38	38.5	39	40	41	41.5	42	42.5	43	43.5	44	45	46	47	48	49	50
British	1.5	2	2.5	3	3.5	4	4.5	5	5.5	6	6.5	7	7.5	8	8.5	9	9.5	10	10.5	11	12	13	14	15
cm Men's			21.5	22	22.5	23	23.5	24	24.5	25	25.5	26	26.5	27	27.5	28	28.5	29	29.5	30	31	32	33	34
cm Women's	21	21.5	22	22.5	23	23.5	24	24.5	25	25.5	26	26.5	27	27.5	28	28.5								

WORK ENVIRONMENT HAZARDS

Every work environment exposes workers to different types of hazards. Each employer is required to perform a workplace assessment to determine the presence of work hazards and the need for personal protective equipment (PPE). In the case of foot injuries, common potential hazards include falling or rolling objects, electrical shock or piercing of footwear soles with sharp objects. There are countless situations and hazards that occur in the workplace everyday that can cause serious foot injury. The best protection from the work hazards that you can and cannot anticipate is quality PPE. For footwear, Red Wing Shoe Company is committed to providing quality, safety footwear for many types of workers and their working environments.

The footwear protection guidelines in this catalog were gathered to provide a general overview and quick comparison of global footwear safety standards. This information is not a definitive standard and we encourage you to refer to the official safety standard for clarification.

PROTECTION STANDARDS Red Wing safety shoes and boots adhere to the most rigorous industry safety standards, regardless of how extreme the conditions. Workers the world over have come to depend on Red Wing boots as the standard in safety footwear performance. Two major governing bodies regulate safety standards in North America: ASTM and CSA.

ASTM International: ASTM plays a leadership role in setting safety standards for footwear and other products.

ASTM F2413-18: Standard Specification for Performance Requirements for Protective (Safety) Toe Cap Footwear. Applies to the following hazards: I, C, Mt, Cd, EH, SD, PR

I/C: This protection signifies impact and compression resistance. It determines a shoe's capacity to protect the toe area against falling or rolling objects.

SD: There are three levels of SD protection - 10, 35 or 100.



Canadian Standards Association (CSA): CSA is a not-for-profit, membership-based association that develops Canadian standards to enhance public safety and health. The standard for foot protection is listed as CSA approved.

CSA Grade 1: Refers to the Canadian Standards Association's (CSA) approval (CAN/CSA-Z195-14) for protective footwear.



Green triangle indicates sole puncture protection with a Grade 1 protective toe cap.



Blue rectangle indicates a Grade 1 protective toe cap without puncture resistant sole.

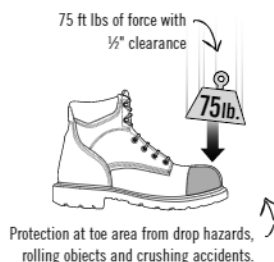


Indicates soles that provide resistance to electrical shock. Under dry conditions, leakage current shall not exceed 1 mA when footwear is exposed to 18 kV at 60Hz for 1 minute.

ASTM F2892-18: Refers to the ASTM Standard Specification for Performance Requirements for Soft Toe Protective Footwear (Non-Safety/Non-Protective Toe). ASTM developed non-safety toe cap (soft toe) requirements to allow manufacturers to demonstrate the performance level of non-safety toe cap (soft toe) footwear. This specification covers minimum requirements for the performance of footwear to provide protection against a variety of workplace hazards other than the toe area that can potentially result in injury, for example, electrical hazard and static dissipative.

Conductive Footwear: Designed to dissipate static electricity from the body, through the shoes into grounded floors. Minimizes static electricity, which reduces the possibility of ignition of volatile chemicals or explosives. **WARNING:** Conductive footwear is not to be worn near open electrical circuits or highly charged objects of any kind requiring electrical hazard (non-conductive) footwear. Red Wing does not currently manufacture or market conductive footwear.

TOE PROTECTION Heavy falling or dropped objects and vehicles in motion are work hazards your customers face every day. In many cases, employers require protective footwear; in other cases, it just makes good sense. Red Wing has three types of toe caps to choose from. All of Red Wing's safety toe footwear meets ASTM F2413-18, I/C standards for impact and compression.



ST Steel Toe: Made of one of the most durable and dependable materials on earth, steel toe caps provide ultimate protection for the most hazardous environments.



NT Non-metallic Toe: Made from varying combinations of nylon, plastic, and fiberglass, this toe cap provides the protection of a steel toe cap without the inconvenience of tripping metal detectors.

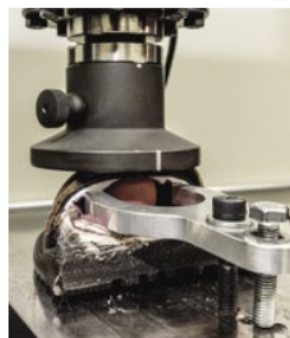


AT Aluminum Toe: Made from aluminum material, these caps are 31% lighter than steel while still meeting the same safety standards.



TESTING: Impact Resistance tests the shoe's capacity to protect the toe area of the foot against falling objects. For Impact testing, a weight is dropped onto the protective toe cap area of the footwear. The clearance remaining inside the cap after impact is then determined. Each standard identifies the atmospheric conditions of the test, the shape of the striker, the amount of weight and distance from which the weight must be dropped, the velocity of the drop and the impact energy delivered.

Left: The weight is dropped onto the protective toe cap area.



TESTING: Compression Resistance tests the shoe's capacity to protect the toe area of the foot against heavy rolling objects. For Compression testing, the toe cap area of the footwear is compressed between parallel platens at a given rate of speed until the required compressive force is reached. The clearance remaining inside the cap after the compression is then determined.

Left: The toe cap is being compressed between the parallel platens.

OTHER PROTECTION CHARACTERISTICS Red Wing designs and builds boots with protection for various applications, including Electrical Hazard, Static-Dissipative, Puncture Resistant, and Metatarsal Guard. All Red Wing safety footwear manufactured after 10/1/18 for use in North America meets ASTM F2413-18 standards.

PR PUNCTURE RESISTANT



Puncture Resistant standards for reducing the possibility of puncture wounds to the sole of the foot by penetrating objects. Footwear contains a puncture-resistant protective device, such as the midsole, that must be an integral part of the shoe to meet ASTM F2413-18. Must withstand a minimum force of not less than 270 pounds-force.

TESTING: Puncture resistant devices are tested using a sharp steel pin forced into the device at a given speed. The force required to puncture through the device is measured. The devices are also tested for flexibility and corrosion resistance.

Right: The steel pin is forced into the midsole to determine the amount of force required to puncture the material.



MT METATARSAL GUARD



Metatarsal Guard standards for protection of the upper foot and toe area. Developed to reduce or prevent injury to the wearer's metatarsal area (instep) and toes from "drop" hazards.

TESTING: For testing, a wax form is fit into the footwear and a weight is dropped onto the protected metatarsal area of the footwear, similar to the impact test. The height of the wax form after impact is then determined.

Right: The weight is dropped on the protected metatarsal area.



EH ELECTRICAL HAZARD



Electrical Hazard protective sole and heel. The sole construction of this footwear is designed to reduce hazards due to contact of the outsole with electrically energized parts, to provide a secondary source of protection. EH designates footwear that is designed to withstand 18,000 volts (rms) at 60Hz for one minute with no current flow or leakage in excess of 1.0 milliamperes (mA) under dry conditions.

WARNINGS: EH footwear is not to be worn near explosives or in other environments requiring conductive footwear. EH protection is severely deteriorated in the following conditions: excessive wear on the soling material or exposure to wet or humid environments or both.

TESTING: To test electric shock resistant properties, the footwear is placed on a metal mesh platform acting as a large electrode. The footwear is filled with small metal spheres and a second electrode is placed within the spheres. A specified high voltage is applied to the footwear through the metal platform for a given length of time. Resistance is determined by the current flow (or leakage) through the footwear.

Right: The boot is placed on the metal mesh platform. The gauges measure leakage through the footwear.



SD STATIC-DISSIPATIVE



Static-Dissipative standards for the reduction of the accumulation of excess static electricity by conducting the charge from the body to the ground, while maintaining electrical resistance from one of the three levels noted below:

- 10⁶ ohms (1 megohm) to 10⁷ ohms (10 megohms)
- 10⁶ ohms (1 megohm) to 3.5 x 10⁷ ohms (35 megohms)
- 10⁶ ohms (1 megohm) to 10⁸ ohms (100 megohms).

RECOMMENDED: Static-dissipative footwear should be worn only in clean environments and in conjunction with static-dissipative flooring.

TESTING: Test methods for Static Dissipation vary by standard, using either human subjects or metal spheres inside footwear that are placed on either a wet or dry base electrode plate. A specified voltage is applied for a prescribed time and the electrical resistance is measured. Test conditions also vary in specified atmospheric conditions.

Right: The tester steps on the base electrode plate while the electrical resistance is measured.



DISCLAIMER: Red Wing Shoe Company, Inc. and their agents expressly state that these descriptions do not represent the actual formal standard - it only provides a quick comparison and general descriptions of testing methods and requirements. Refer to the actual published standards for specific requirements.

This general standards reference guide does not purport to address all of the safety concerns, if any, associated with its use. It is the responsibility of the user of these standards to establish appropriate safety and health practices and determine the applicability of regulatory limitations prior to use.

The standards are subject to revision at any time by the responsible technical committee(s). ASTM standards must be reviewed every five years and if not revised, either re-approved or withdrawn.

DISCLAIMER: While all Red Wings protect your feet in one way or another, accidents can still happen and injuries can still occur. In an effort to prevent or minimize injury in the event of an accident, we offer footwear with the features above for added protection for your feet from the dangers of the job.

RED WING WARRANTY

LIMITED WARRANTY RELATING TO RED WING BRANDED FOOTWEAR:

Footwear products bearing the “Red Wing” or “Red Wing Shoes” label are warranted against defects in workmanship and materials. If within 12 months of purchase from an authorized seller, a defect occurs in a Red Wing branded footwear product as the result of normal use, Red Wing will repair the defect or exchange the product. Product failures caused by excessive or abusive wear conditions do not qualify for exchange or purchase credit. This warranty is available only to the original purchaser and is not transferable. No adjustment will be given without the original receipt of purchase from an authorized seller. You must return your footwear to the Red Wing Shoe seller from which the footwear was purchased.

DISCLAIMER: The limited warranty relating to Red Wing branded footwear is in lieu of any other express warranty. No agent, employee or representative of Red Wing has any authority to bind Red Wing to any affirmation, representation or warranty concerning Red Wing branded footwear products, except as stated herein. Red Wing shall not be liable for any consequential, incidental or punitive damages.

This limited product warranty gives you specific legal rights, and you may also have other rights that vary from state to state. Any implied warranties shall be effective for a period not exceeding 12 months from the date of purchase from an authorized seller. Some states do not allow manufacturers to impose time limitations on certain implied warranties, so the above limitation may not apply to you.

RED WING SHOES*

**30 DAY
UNCONDITIONAL
COMFORT GUARANTEE**

If during the first thirty (30) days immediately following your purchase you are not satisfied with the comfort of your Red Wing branded work footwear for whatever reason, Red Wing will exchange or refund the purchase price to you, no questions asked, provided you still have your dated receipt of purchase. No adjustment will be given without the original receipt of purchase. You must return your footwear to the Red Wing Shoe dealer from which the footwear was purchased. Limit one return per purchase. This guarantee does not apply to WORX, Red Wing Heritage, Irish Setter or Vasque branded footwear.

IRISH SETTER WARRANTY

LIMITED WARRANTY RELATING TO IRISH SETTER FOOTWEAR

This warranty is available only to the original purchaser and is not transferable. No adjustment will be given without the original receipt of purchase from an authorized seller. You must return your footwear to the Irish Setter seller from which the footwear was purchased. Irish Setter Work branded footwear products are warranted against defects in workmanship and materials. If within 6 months of purchase from an authorized seller, a defect occurs in an Irish Setter Work branded footwear product as the result of normal use, Red Wing Brands of America, Inc. (“Red Wing”) will repair the defect or exchange the product. Product failures caused by excessive or abusive wear conditions do not qualify for exchange or purchase credit.

Irish Setter Hunt branded footwear products are warranted against defects in workmanship and materials. If within 12 months of purchase from an authorized seller, a defect occurs in an Irish Setter Hunt branded footwear product as the result of normal use, Red Wing Brands of America, Inc.

(“Red Wing”) will repair the defect or exchange the product. Product failures caused by excessive or abusive wear conditions, or if worn for occupational purposes, do not qualify for exchange or purchase credit.

DISCLAIMER: The limited warranty relating to Irish Setter branded footwear is in lieu of any other express warranty. No agent, employee or representative of Red Wing has any authority to bind Red Wing to any affirmation, representation or warranty concerning Irish Setter branded footwear products, except as stated herein. Red Wing shall not be liable for any consequential, incidental or punitive damages.

This limited product warranty gives you specific legal rights, and you may also have other rights that vary from state to state. Any implied warranties shall be effective for a period not exceeding 6 months from the date of purchase from an authorized seller. Some states do not allow manufacturers to impose time limitations on certain implied warranties, so the above limitation may not apply to you.

WORX WARRANTY

LIMITED WARRANTY RELATING TO WORX FOOTWEAR:

WORX branded footwear products are warranted against defects in workmanship and materials. If within 6 months of purchase from an authorized seller, a defect occurs in a WORX branded footwear product as the result of normal use, Red Wing Brands of America, Inc. (“Red Wing”) will repair the defect or exchange the product. Product failures caused by excessive or abusive wear conditions do not qualify for exchange or purchase credit. This warranty is available only to the original purchaser and is not transferable. No adjustment will be given without the original receipt of purchase from an authorized seller. You must return your footwear to the WORX seller from which the footwear was purchased.

DISCLAIMER: The limited warranty relating to WORX branded footwear is in lieu of any other express warranty. No agent, employee or representative of Red Wing has any authority to bind Red Wing to any affirmation, representation or warranty concerning WORX branded footwear products, except as stated herein. Red Wing shall not be liable for any consequential, incidental or punitive damages.

This limited product warranty gives you specific legal rights, and you may also have other rights that vary from state to state. Any implied warranties shall be effective for a period not exceeding 6 months from the date of purchase from an authorized seller. Some states do not allow manufacturers to impose time limitations on certain implied warranties, so the above limitation may not apply to you.

CHANGE NOTICE

We have made every effort to make this catalog accurate. Due to improvement of product performance and availability of materials, there may be specification changes made during the year. Red Wing Brands of America, Inc. reserves the right to discontinue or drop products, sizes, widths or styles without prior notice. Policies, specifications and designs are subject to change without notice. For current warranty information, including return policies, please visit our website at: www.redwingshoes.com/red-wing-shoes-warranty